

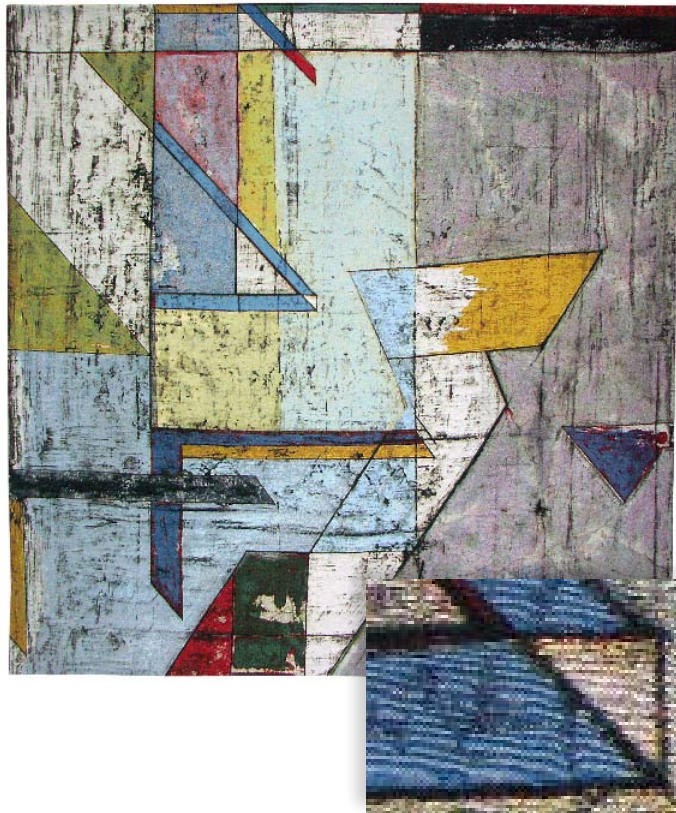
## George Miyasaki

George Miyasaki's steadfast commitment to printmaking has yielded a highly influential and admired body of work. For those keeping score, the masterful balance of muscular and delicate elements in Miyasaki's prints has also proven the West Coast strain of Abstract Expressionism to be every bit as vital and impressive as its New York counterpart. The artist has produced numerous intaglio and lithographic editions at Magnolia Editions; *Terra Incognita*, his first woven edition, was created by digitally hybridizing multiple collograph prints into a unique new composition. *Terra* is classic Miyasaki writ large, possessing the artist's signature combination of nuanced, topographic textures, hard-edged geometric shapes and expertly measured washes of color. With the magnification of scale that the tapestry medium affords, the playful call-and-response of Miyasaki's linear forms is amplified, becoming instantly accessible.

### *About the Magnolia Tapestry Project*

Rather than weaving solid areas of color, as in traditional hand weaving, the Magnolia Tapestry Project's method makes the most of Jacquard technology's potential to weave a complex, mosaic-like network of color combinations. Work by contemporary artists is translated into a digital "weave file" using custom calibrated color palettes developed at Magnolia Editions. The completed weave file is sent to a small, family-owned mill in Belgium to be woven on a double-headed Jacquard loom, where 17,800 available warp threads generate colors of unprecedented variety and density. Finally, the work returns to Magnolia Editions in its woven form, to be approved and signed by the artist.

In the same way that Tamarind and Gemini put the commercial lithographic technology of the 19th century into the hands of fine artists in the fifties and sixties, the Magnolia



*Terra Incognita*, 2005 - Jacquard Tapestry, 80 x 80 in., Edition of 6.  
Inset: detail of *Terra Incognita*.

Tapestry Project is putting the electronic Jacquard loom to work in unexpected ways for today's artists. The Project includes tapestries representative of several generations and numerous art movements: the Pop princesses of Mel Ramos; the monumental, Expressionistic figures of Leon Golub; the hyper-realism of Alan Magee and Guy Diehl; the playful poetics of Squeak Carnwath and William Wiley; the post-Surrealist visions of Bruce Conner, and the abstract wizardry of Ed Moses are all re-envisioned in striking new editions. The Magnolia Tapestry Project has also produced tapestries by Chuck Close, Lia Cook, Lewis deSoto, Donald and Era Farnsworth, Rupert Garcia, Diane Andrews Hall, Gus Heinze, Robert Kushner, John Nava, Nancy Spero, Katherine Westerhout and others. ■