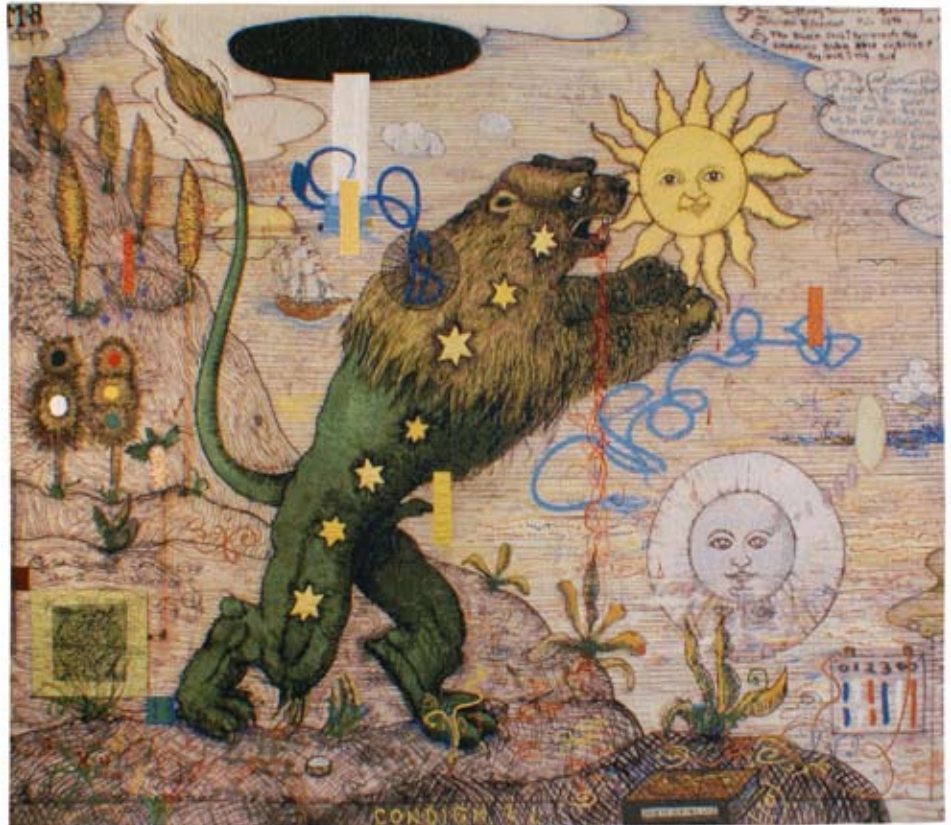


# William Wiley: *Alchemical Lyon*

In January of 2007, acclaimed West Coast artist William Wiley created his seventh tapestry edition, *Alchemical Lyon*. The work draws from a host of Wiley's favorite inspirations, among them the esoteric world of medieval alchemy, the iconoclastic rhythms of graffiti, and the East-West antagonism that characterizes the current political sphere. The tapestry was woven from a mixed-media collage: rather than digitally combining scanned imagery, Wiley used a print of an earlier painting as a ground, to which he added painted, drawn and collaged elements by hand. 'Stoplights' at the left-hand side reference Wiley's recent series in which a black-and-white world is contrasted with brilliantly colored imagery.



*Alchemical Lyon*, 2007, Jacquard tapestry, 72 x 84 in., edition of 6

## *About the Magnolia Tapestry Project*

The Magnolia Tapestry Project emerged from artist John Nava's commission to decorate the vast interior walls of the Cathedral of Our Lady of the Angels in Los Angeles, which required a consideration of the acoustical demands of the space: the decorative element was to function practically by reducing unwanted reverberation, prompting an inquiry into the use of textiles. Nava and Magnolia Editions co-director Donald Farnsworth subsequently collaborated on a series of woven experiments which grew into

an unorthodox approach to Jacquard weaving, whereby work by contemporary artists is translated into a digital "weave file" using custom calibrated color palettes developed at Magnolia Editions. Each completed weave file is woven in Belgium on a double-headed Jacquard loom using 17,800 available warp threads.

In the same way that Tamarind and Gemini put the commercial lithographic technology of the 19th century into the hands of fine artists in the fifties and sixties, the Magnolia Tapestry Project is putting the electronic Jacquard loom to work in unexpected ways

for contemporary artists. The Project includes tapestries representative of several generations and numerous art movements: the formally rigorous portraits of Chuck Close; the monumental figures of Leon Golub; the hyper-realism of Alan Magee; the post-Surrealist visions of Bruce Conner, and the abstractions of Ed Moses and George Miyasaki are all re-envisioned in striking new editions. The Magnolia Tapestry Project has also produced tapestries by Squeak Carnwath, Lewis deSoto, Guy Diehl, Donald and Era Farnsworth, Rupert Garcia, Diane Andrews Hall, Doug Hall, Gus Heinze, Robert Kushner, John Nava, Nancy Spero and others. ■