



Leon Golub, *Reclining Youth*, 2003, the tapestry, 82 x 168 inches

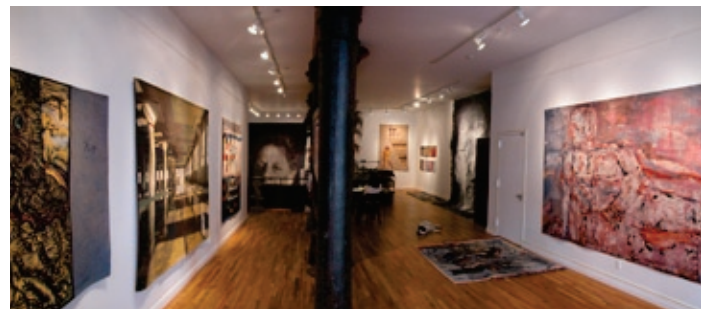
Derived from Mr. Golub's 1959 lacquer on canvas painting, *Reclining Youth*. Collection of the Museum of Contemporary Art in Chicago, a gift of Susan and Lewis Manilow.

### **The Magnolia Tapestry Project: Making Headway in an Ancient Art Form**

The director of Magnolia Editions, Donald Farnsworth, in collaboration with artist John Nava, has made a series of innovations to Jacquard loom technology, creating a new system which allows for a more precise correspondence between an artist's digital file and the threads which compose a tapestry. The Magnolia Tapestry Project, initiated in 1999, is honored to be working with many artists new to Magnolia, including the distinguished artist, Leon Golub. A reincarnation of Golub's iconic 1959 painting, *Reclining Youth*, 2003, fuses Golub's expressive style with the distinctive medium of tapestry, resulting in a work of epic nature. The artist's unique handling of materials retains its integrity through its transformation into tapestry, attesting to the accommodating nature of the medium.

*Reclining Youth*, 2003, as well as tapestries by Nancy Spero, Squeak Carnwath, Lewis deSoto, William Wiley, Alan Magee, Rupert Garcia, Katherine Westerhout and

Donald Farnsworth were on view this September in a New York Tribeca gallery. Artists and dealers were invited to view the new works and to discuss future plans. The warm reception Magnolia Editions received from its New York artists and representatives from Gagosian Gallery, Charles Cowles Gallery, Knoedler Gallery, Susan Inglett Gallery, Bill Maynes Gallery, and others, forecasts many future cross-continental trips.



Magnolia Tapestry Project, NY 2003

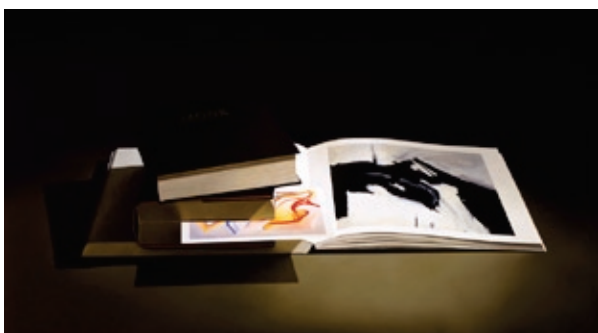
For more information visit: [www.magnoliaeditions.com](http://www.magnoliaeditions.com)

© 2003 Magnolia Editions, Inc. All rights reserved. Images may not be distributed without express written permission.

## New Editions by Bruce Conner

Since November of 2002, Bruce Conner has been working twice a week with Donald Farnsworth at Magnolia Editions. The result is a series of prints and tapestries by Bruce Conner and works by Diogenes Lucero, BOMBHEAD, Anonymouse and Emily Feather, all artists represented by Bruce Conner. This work will be the subject of our next newsletter.

## New Editions by Guy Diehl



*Still Life with Kline, DeKooning & Thelonious Monk*  
Guy Diehl, 2003

In his latest collection of prints created at Magnolia Editions, Guy Diehl furthers his exploration of the legacy of still life painting via the work of his predecessors: Canaletto, Cezanne, and Raphaelle Peal, to name a few.

Each of these prints exemplifies Diehl's masterful handling of color and contour, depth and shadow, weight and lightness, always through a minimalist eye that filters out extraneous information and "captures the fundamental nature of the subject matter." As Diehl says of his own artistic approach, "To know what to paint and what to exclude is the challenge."

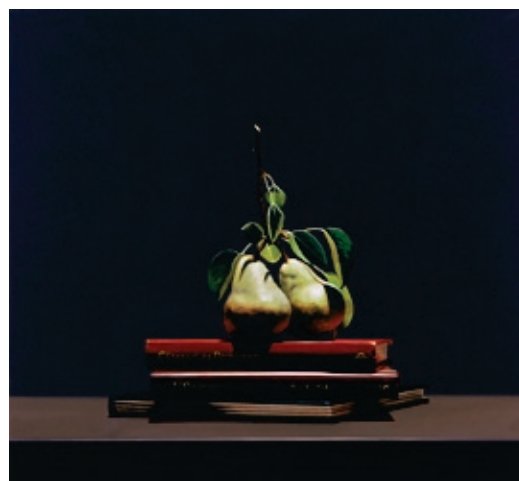
Instead of producing these works as traditional lithographs, Diehl has transposed his paintings into a digital medium, thereby sparking an intriguing juxtaposition with his personal aesthetic of classical style and treatment.

## Where to see work from Magnolia Editions and The Magnolia Tapestry Project:

**At the Sonoma Museum of Visual Art**, the exhibition *William T. Wiley: Before Math & After Math* is on view through November 16. *Canister under the Banister*, a tapestry produced by The Magnolia Tapestry Project, contributes to the great diversity of works presented in this show.

**In San Francisco**, Michelle Bello Fine Art at Sloan Miyasato in The Design Center is currently exhibiting tapestries by Squeak Carnwath, Joseph Goldyne, Nancy Spero and Donald & Era Farnsworth. The work will be on display through November 2003. The Design Center is now open to the public Monday through Friday from 9 to 5 at 2 Henry Adams Street, Suite 212.

**In New York**, Bruce Conner's upcoming show at the Susan Inglett Gallery will feature tapestries produced by The Magnolia Tapestry Project, along with drawings, lithographs published by Bruce Conner and etchings by I.C. Editions. The exhibition opens November 20 and runs through December 20. The gallery will host a second show from January 8 to February 7, 2004, which will feature prints by Bruce Conner published by Magnolia Editions. The Susan Inglett Gallery has moved to a new location in Chelsea at 535 W. 22<sup>nd</sup> Street, phone: 212-647-9111.



*Still Life with Cezanne & Emile Zola*  
Guy Diehl, 2003

For more information visit: [www.magnoliaeditions.com](http://www.magnoliaeditions.com)

© 2003 Magnolia Editions, Inc. All rights reserved. Images may not be distributed without express written permission.





*Man with Cup, #1,*  
Dan McCleary, 1991

**Also in New York**, Leon Golub's *Reclining Youth*, 2003, will be shown at the artist's upcoming exhibition opening January 10, 2004, at Ronald Feldman Fine Arts, 31 Mercer Street, New York, [www.feldmangallery.com](http://www.feldmangallery.com).

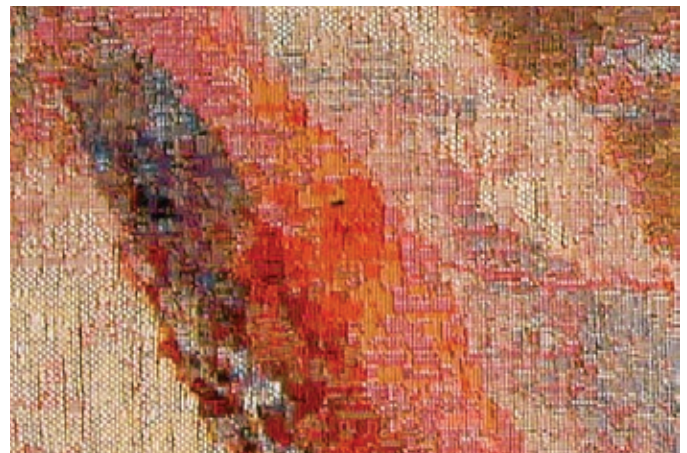
**At Rutgers University, The Jane Voorhees Zimmerli Art Museum**, New Brunswick, NJ, *Newer Genres: Twenty Years of the Rutgers Archives for Printmaking Studios*. December 7, 2003 through March 21, 2004. The Zimmerli celebrates the 20<sup>th</sup> anniversary of the founding of the Rutgers Archives for Printmaking Studios with *Newer Genres*, an exhibition and a CD ROM catalogue of more than 100 print donations from member studios. Artists participating in the exhibition, with work published by Magnolia Editions, are Bruce Conner, Rick Dula, Donald Farnsworth, Gus Heinze, Diogenes Lucero, Richard Shaw, Mark Stock and Katherine Westerhout.

**The Bakersfield Museum of Art**, *Dan McCleary, a Survey of Prints, 1990–2003*, from December 6, 2003 through February 12, 2004. The show will include lithographs and etchings, many of them hand-colored, produced at Magnolia Editions.

**In Sausalito**, The Edith Caldwell Gallery, now open at 819 Bridgeway, Sausalito, California, will be exhibiting new tapestries by Alan Magee and an overview of prints by Magnolia Editions from November 12 through December 6, 2003. The gallery is hosting a book signing by Alan Magee opening night, November 12, from 6:00 pm to 8:00 pm. Mr. Magee will be signing copies of *ALAN MAGEE, Paintings, Sculpture, Graphics*, with images by Alan Magee and commentary by Barry Lopez and Jonathan Weiner. For more information, please call Edith Caldwell at 415-331-5003.

**Alan Magee's tapestries**, produced by The Magnolia Tapestry Project, can also be seen at the following museums exhibiting the artist's traveling retrospective: James A. Michener Art Museum, Bucks County, PA, 10/25/03 to 1/26/04; Farnsworth Art Museum, Rockland, ME, 5/30/04 to 9/3/04; The Museum of Texas Tech University, Lubbock, TX 10/3/04 to 1/2/05; Frye Art Museum, Seattle, WA, 1/29/05 to 4/24/05. See [www.alanmagee.com](http://www.alanmagee.com) under "News" for more information.

**Lewis deSoto** is currently working with Donald Farnsworth on a series of tapestries for the San Francisco Arts Commission and the Laguna Honda Hospital in San Francisco. The series of 16 tapestries will document the history of the hospital. The project, which is part of a total renovation of the hospital, is planned for completion and permanent installation in 2007/2008.



*Reclining Youth, 2003, (detail)*

For more information visit: [www.magnoliaeditions.com](http://www.magnoliaeditions.com)

© 2003 Magnolia Editions, Inc. All rights reserved. Images may not be distributed without express written permission.