

## NEW EDITIONS:

### *Mel Ramos*

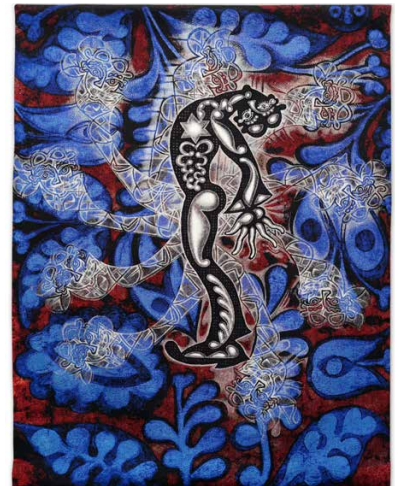
Mel Ramos' latest woodcut edition *Hawkman* revisits another of the iconic superhero paintings that catalyzed his emergence in the early 1960s as one of Pop Art's most recognizable figures. Ramos's work often includes playful nods to art history, and *Hawkman* is no different, with winged slippers harkening back to the Greek god Mercury and a bird-shaped mask that strongly recalls Hieronymous Bosch's bird-headed figures. *Hawkman* is also the most dynamic of Ramos's superhero prints to date: its protagonist hangs suspended in mid-flight, a muscular, colorful seraphim for the postmodern age. ■



Mel Ramos - *Hawkman*, 2015. Woodcut with UV-cured acrylic, 44 x 30 in. Edition of 30

### *Carlos Luna*

Several new tapestry and print editions by Cuban-born artist Carlos Luna made their debut at Miami's Frost Museum in an exhibition curated by Barbaro Martinez-Ruiz, on view through September 13 of this year. Luna's intense color palette and dramatic graphic sensibility translated handsomely into the textile medium; for a gallery of photos from the exhibition, please visit [Magnolia on Facebook](#). ■



Carlos Luna - *Dreamer*, 2015. Jacquard tapestry. 93 by 72 in. Edition of 10



Carlos Luna - *Heartbreaker*, 2015. Jacquard tapestry, 95 by 66 in. Edition of 10



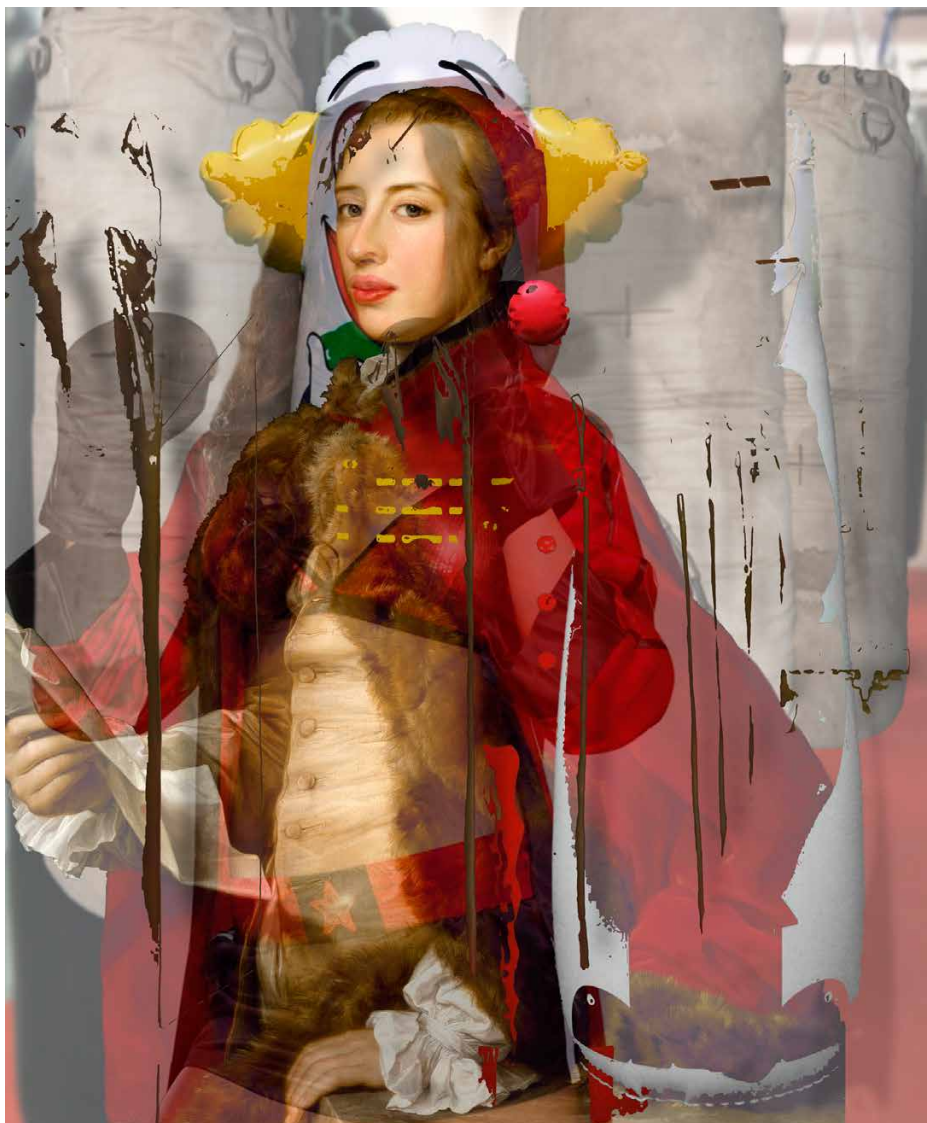
## Deborah Oropallo

Deborah Oropallo's creations at Magnolia this year have taken the form of unique works on canvas: each image is a one-of-a-kind creation, combining digital manipulation with an innovative, layered approach to composition and printing. The works' subject matter continues in the vein of Oropallo's popular *Guise* series, combining opulent 18th century portraits of men with contemporary images of women in revealing, sexualized uniforms to explore the optics of power, gender, and costume. Oropallo is represented by Catherine Clark Gallery in San Francisco. ■

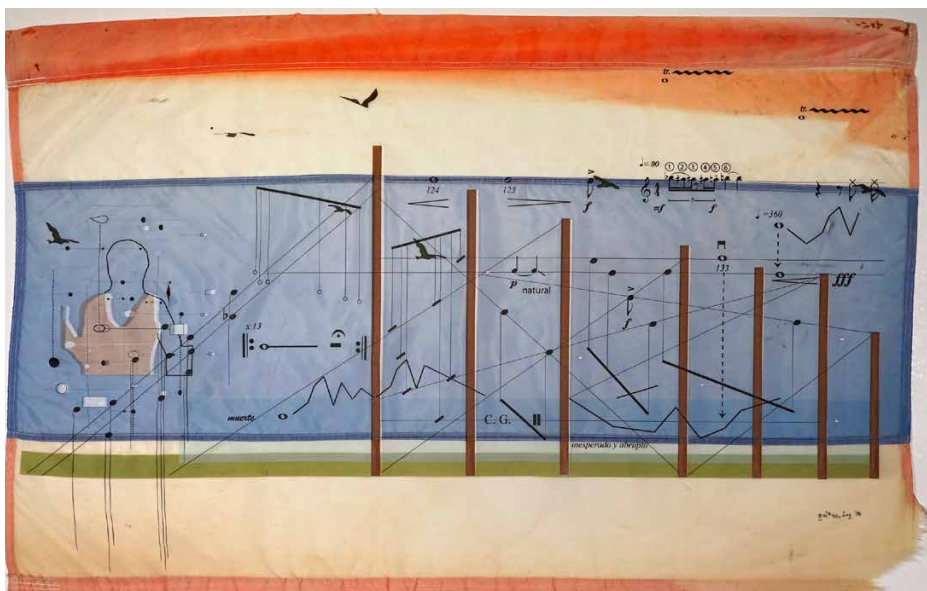
## Guillermo Galindo

Magnolia's new publications by genre-defying composer, performer, visual and sound artist Guillermo Galindo are the products of an ongoing collaboration with photographer Richard Misrach. Galindo has taken artifacts found by Misrach during photographic excursions at the border between the United States and Mexico as a point of departure for a series of mixed-media musical scores. His *Flag* works are printed directly upon a group of faded, weathered flags discarded at the border: these flags were once used to indicate the presence of water tanks placed in the Calexico desert by an altruist citizen organization.

In addition to the inclusion of these found flags, several of Galindo's new works incorporate custom paint and gesso formulated at Magnolia by Guy Diehl and Donald Farnsworth by grinding pigment from rocks and minerals found at the border, as well as handmade paper fabricated at Magnolia's paper mill from abandoned clothing collected at the border by Misrach.



Deborah Oropallo - *The Fighter*, 2015. UV Acrylic on canvas, 58 × 48 in.



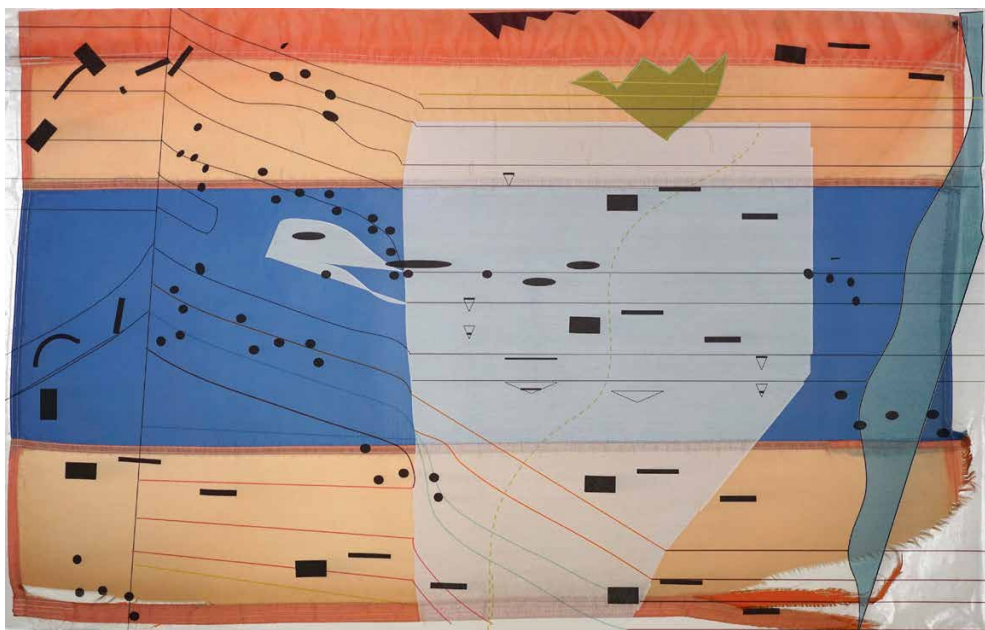
Guillermo Galindo - *American Dream Flag*, 2015. UV Acrylic ink on found flag, 29.5 x 47 in.



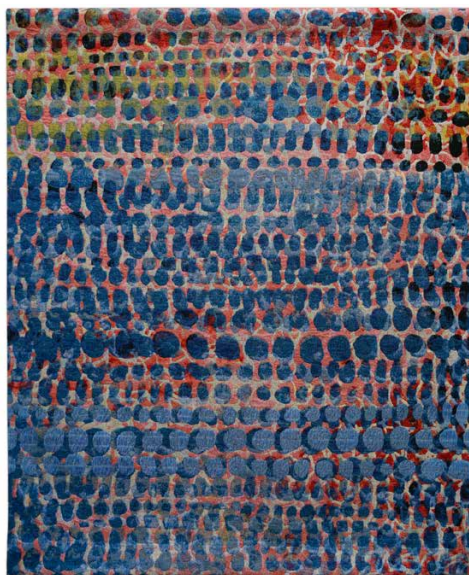
Galindo's practice often incorporates playable instruments he has fabricated from objects retrieved from the border. Here too he uses the rhythms and patterns of music — as filtered through various inventive modes of visual representation — to elegantly summon a living history from that which has been discarded and forgotten. ■

## Tallulah Terryll

*Willow* translates the lyrical, abstract layers of stenciled glyphs in Tallulah Terryll's prints and paintings into a satisfyingly continuous woven surface. The tapestry's imagery emerged from drawings of microscopically enlarged slide samples of the bark of a willow tree; as the precursor to aspirin, she explains, willow bark was chosen "as a reference to the pain relieving qualities of beauty and art." Terryll selected the color palette for *Willow* with an eye toward the weave structure unique to each color: by strategically placing colors that utilize "floats" (threads which seem to hover slightly above the others) in the composition's foreground, she imparts a surprising degree of dimensionality to the lively, kaleidoscopic rhythms of the tapestry's surface. ■



Guillermo Galindo - *Sarape Flag*, 2015  
Acrylic ink on found flag, 31 x 47 in.



Tallulah Terryll - *Willow*, 2015  
Jacquard tapestry, 70 x 59 in.  
Edition of 6



## Aziz + Cucher

New York-based collaborative team Anthony Aziz and Sammy Cucher are pioneers in the field of digital imaging; their new tapestry edition is part of their "Some People" series, which investigates common ground between events such as the Israeli-Palestinian conflict and the events of 9/11 to reveal, writes one curator, "a cycle of tragic and absurd inevitability begun in antiquity that continues today." ■

Aziz + Cucher - *Some People*, 2014  
Jacquard tapestry, 74 x 124 in. Edition of 6



## STUDIO NEWS: *Mildred Howard receives Lee Krasner Award*

We are thrilled to congratulate Mildred Howard on receiving the Lee Krasner Award. These awards are given by nomination only to candidates who have demonstrated a lifetime of artistic achievement. Howard is represented by Gallery Paule Anglim in San Francisco, whose website notes: "This honor is a tribute to and recognition of artists with long and distinguished careers." Congratulations, Mildred! ■



Mildred Howard - *The Magnolia Project: That Was Then And Here Is Now II*, 2008  
Buttons on canvas and pigmented ink. 36 x 38 in.

## SHOWS & EVENTS:

### The Patricia & Phillip Frost Museum

*The Green Machine: the Art of Carlos Luna*

Painting, sculpture, and new tapestries by Luna appear in this show curated by Barbaro Martinez-Ruiz.

June 13, 2015 - September 13, 2015

(305)348-2890 / 10975 S.W. 17th Street, Miami, FL 33199

Tues - Sat 10-5; Sun 12-5; closed Mondays

[http://thefrost.fiu.edu/ex\\_future.htm](http://thefrost.fiu.edu/ex_future.htm)

### Foundry Vineyards

*Chuck Close/Kiki Smith: Tapestries from Magnolia Editions*  
Six tapestries by Chuck Close and Kiki Smith.

June 18, 2015 - August 28, 2015

(509)529-0736 / 1111 Abadie St, Walla Walla, WA 99362

Thurs - Sun, 11 - 5 pm

<http://union-bulletin.com/events/ongoing/art-exhibition-chuck-close-kiki-smi/>

### Graphic Arts Institute of Oaxaca (IAGO)

*Enrique Chagoya*

A survey of prints by Enrique Chagoya.

Opening August 18, 2015

01-951-51-6-20-45

M. Alcalá 507, Centro; Oaxaca de Juárez, México

<https://www.facebook.com/IAGOmex>

### Galerie Ernst Hilger

*Mel Ramos: Peek-A-Boo*

Work in a variety of media by Mel Ramos including his new *Hawkman* woodcut print from Magnolia Editions.

July 4, 2015 - September 4, 2015

+43-1-512 53 15 / Dorotheergasse 5, 1010 Wien, Austria

Tues - Fri 11-6; Sat 11-4; closed Mondays

[http://www.hilger.at/823\\_EN-galery-Galerie\\_Ernst\\_Hilger.htm](http://www.hilger.at/823_EN-galery-Galerie_Ernst_Hilger.htm) ■